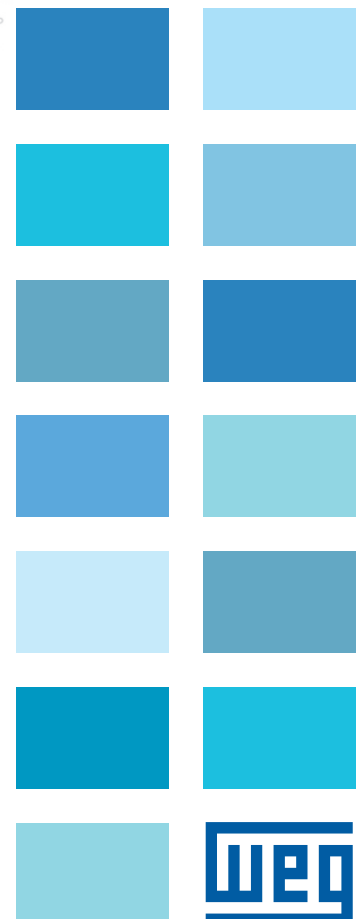
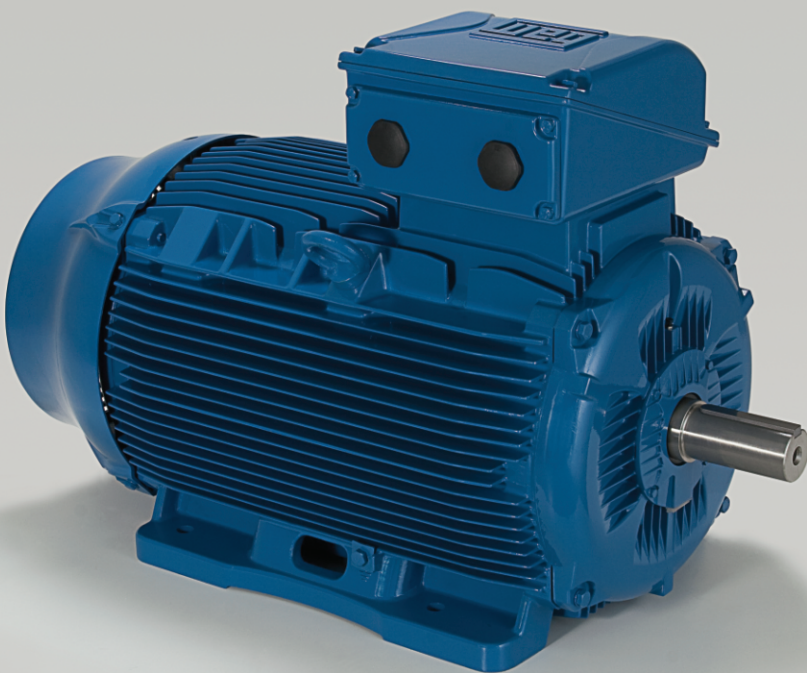
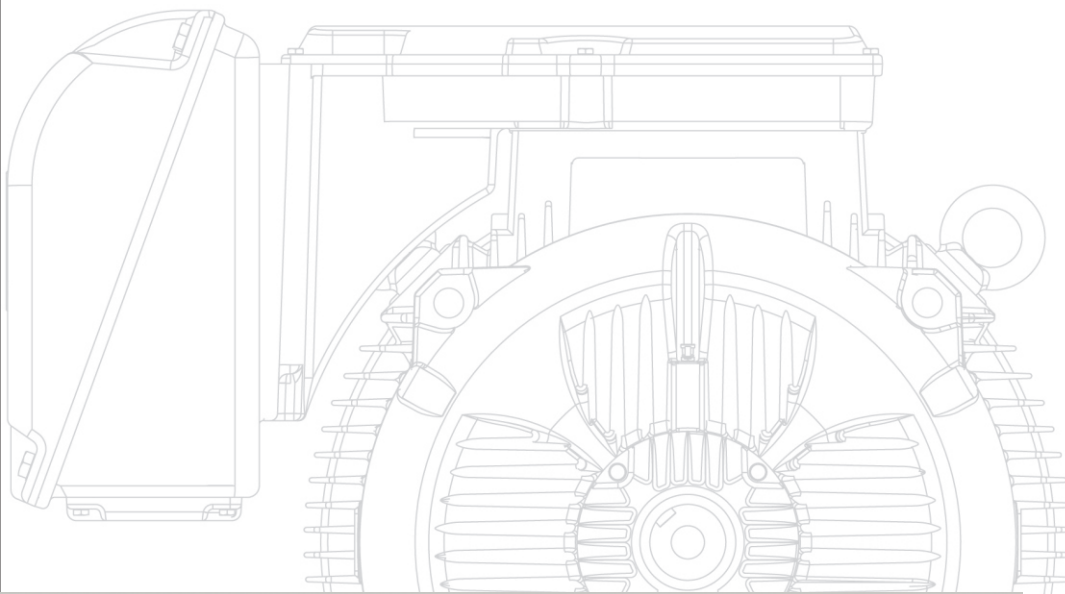


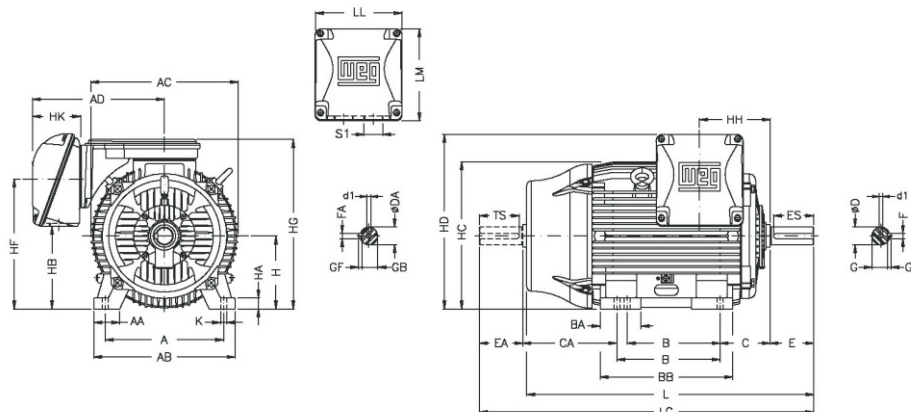
Motores Trifásicos

Línea W22



Medidas

Dimensiones en mm.



Carcasa	A	AA	AB	AC	AD	AD(*)	B	BA	BB	C	Eje											
											D	E	ES	F	G	GD	DA	EA	TS	FA	GB	GF
225	356	80	436	455	408	384	286	124	412	149	55	110	100	16	49	10	55	110	100	16	49	10
250	406	100	506	486		402	311	146	467	168	60	140	125	18	53	11	60	140	125	18	53	11
					349	65	58															
280	457	100	557	599	442	472	368	151	517	190	75	140	125	20	67.5	12	65	140	125	18	58	11
							419	65	18	58	11											
315S/M	508	120	630	657	525	530	406	184	621	216	65	170	160	22	71	14	65	140	125	18	58	11
							457				80											
315L	508	120	630	657	589	575	508	219	752	216	65	140	125	18	58	11	60	140	125	18	58	11
							80				65											
355M/L	610	140	750	736	609	625	560	230	760	254	75	140	125	20	67.5	12	60	140	125	18	53	11
							630				100											

Carcasa	H	HA	HB	HC	HD'(*)	HD	HF	HG	HH	HK	LL	LM	K	L	S1	d1	d2	Rodamientos	
																		D.E.	N.D.E.
225	225	34	255	453	609	550	403	523	212	143	261	292	18.5	856	2xM50x1.5	M20	M20	6314 - C3	
250	250	43	290	493	652	583	449	566	232					24				965	6316 - C3
280	280	42	383	580	752	696	550	667	266	308	313	24	1071	2xM63x1.5	M20	M20	6314 - C3		
315S/M	315	48	386	644	845	768	615	744	264	177	372	382	1244				6319 - C3 6316 - C3		
			1274		6319 - C3 6316 - C3														
315L	315	48	336	644	890	774	575	760	284	215	404	438	1353	6319 - C3 6316 - C3					
			1383		6316 - C3 6314 - C3														
355M/L	355	50	426	723	980	863	665	850	340	215	404	438	1412	6316 - C3 6314 - C3					
			1482		NU-322-C3 6319 - C3														

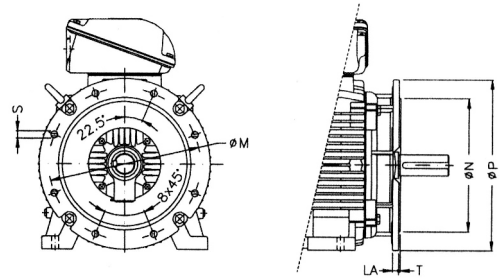
* Dimensiones Aplicables para posición de montaje B3T



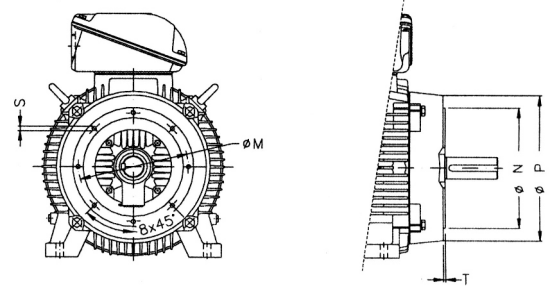
Motores Trifásicos - IPW55

Dimensiones en mm.

Frame	Flange	LA	M	N	P	S	T	α	Nº of Hora
225S/M	FF-400	18	400	350	450	19	5	22° 30'	8
250 S/M	FF-500	18	500	450	550	19	5	22° 30'	8
280S/M	FF-500	18	500	450	550	19	5	22° 30'	8
315S/M	FF-600	22	600	550	660	24	6	22° 30'	8
315L	FF-600	22	600	550	660	24	6	22° 30'	8
355M/L	FF-740	22	740	680	800	24	6	22° 30'	8



Frame	Flange	M	N	P	S	T	α	Nº of Hora
225S/M	FC-279	279.4	317.5	395	UNC 5/8"x11	6.3	22° 30'	8
250 S/M	FC-355	355.6	406.4	455	UNC 5/8"x11	6.3	22° 30'	8
280S/M	FC-355	355.6	406.4	455	UNC 5/8"x11	6.3	22° 30'	8
315S/M	FC-368	368.3	419.1	455	UNC 5/8"x11	6.3	22° 30'	8
315L	FC-368	368.3	419.1	455	UNC 5/8"x11	6.3	22° 30'	8
355M/L	FC-368	368.3	419.1	455	UNC 5/8"x11	6.3	22° 30'	8



Dimensiones en (m.) del embalaje de madera

Carcaza	Alto (m)	Ancho (m)	Largo (m)	Peso (Kg)	Volumen (m3)
225S/M	0.82	0.8	1.05	47	0.68
250 S/M	0.86	0.82	1.15	50	0.8
280S/M	0.97	0.9	1.25	65	1.09
315S/M	1.1	1.07	1.46	129	1.7
315L	1.1	1.13	1.57	135	1.93
355M/L	1.2	1.19	1.72	146	2.43